



INFORMATION  
*international* SAL

RESEARCH CONSULTANTS

### **Arab Summit**

This nation-wide survey aimed at gauging public perceptions and expectations on the crucial issues facing the Arab Nations, including the level of support for the Arab League Summit, views regarding peace and normalization by Arab states towards Israel, most important Arab issue as well as the expected results from this Summit.

11 Pages

-  
-

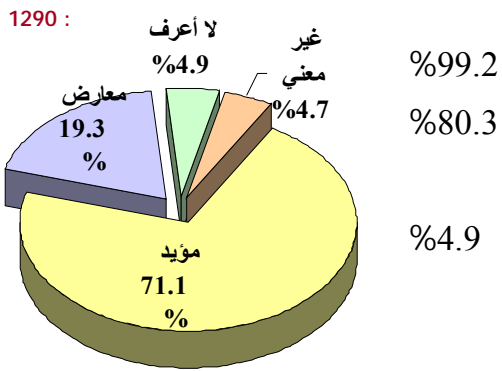
2002 25-21

" "   
*Information International*

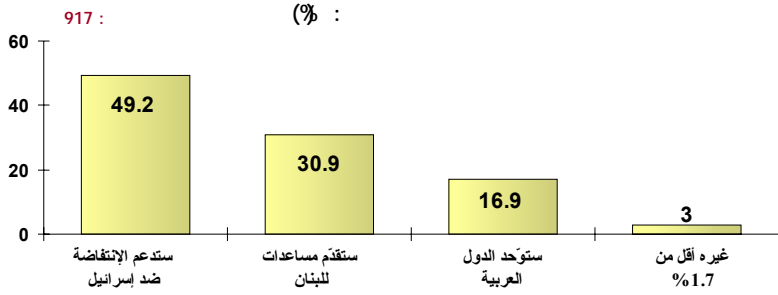
Information International "

54

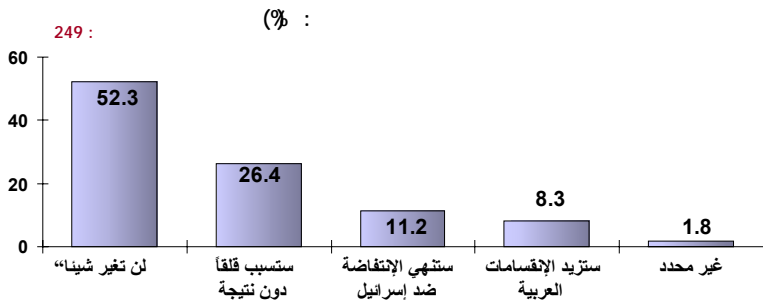
-1



%99.2  
%80.3  
%0.8  
%71.1  
%19.3  
%4.9  
%4.7

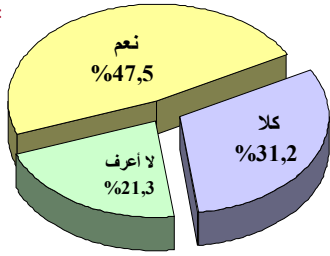


49.2 :  
%30.9  
%16.9  
%3  
%1.7



%52.3 :  
%26.4  
%11.2  
%8.3  
%1.8

1290 :



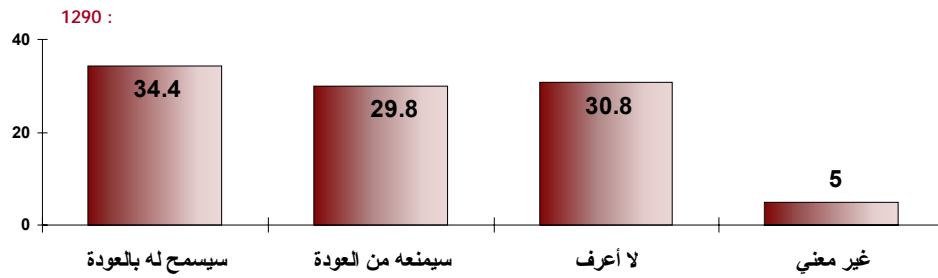
%47.5

." " %21.3 %31.2

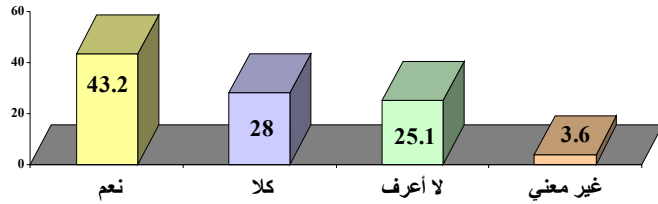
%34.4

%29.8

." " %5 " " %30.8



1290 :



%43.2

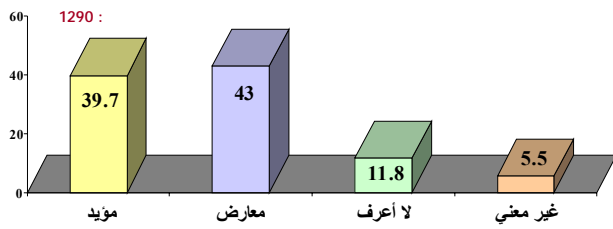
" %25.2

%28

."

" %3.6 "

1290 :



%43

%39.7

" %5.5 "

" %11.8

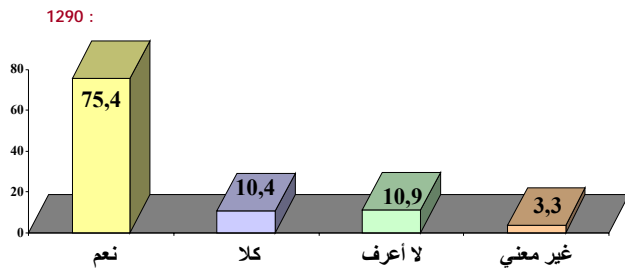
."

32.8 : %39.4 %32.8 " %20 " %7.8 " " %43 %

%29.1 %29.8 " %14 " %0.5 " %6.3 %20.3 " " "

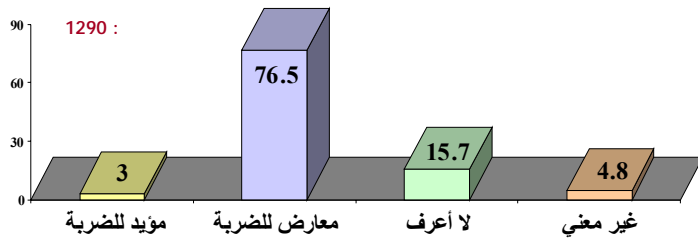
" %9.5 %35 %55.5

-4



%75.4

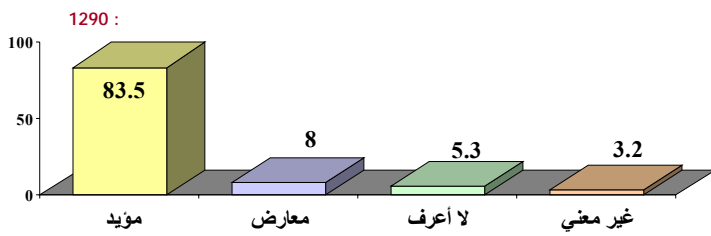
" " %10.9 %10.4 " %3.3



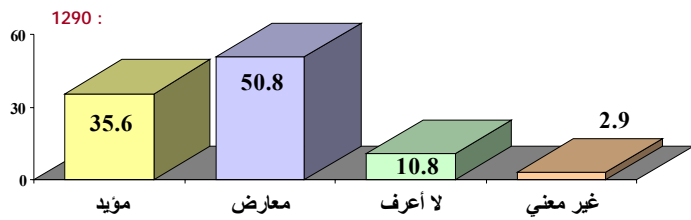
%76.5

%3 " %4.8 " " %15.7 " 38.5 " "

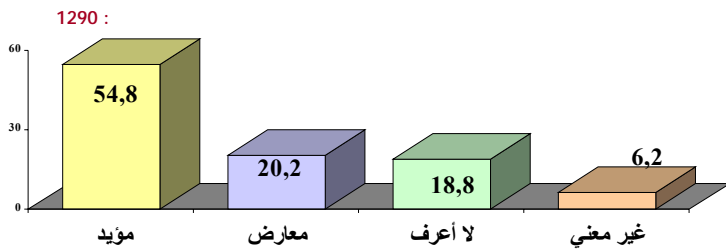
" " %36 %21 " %4.5



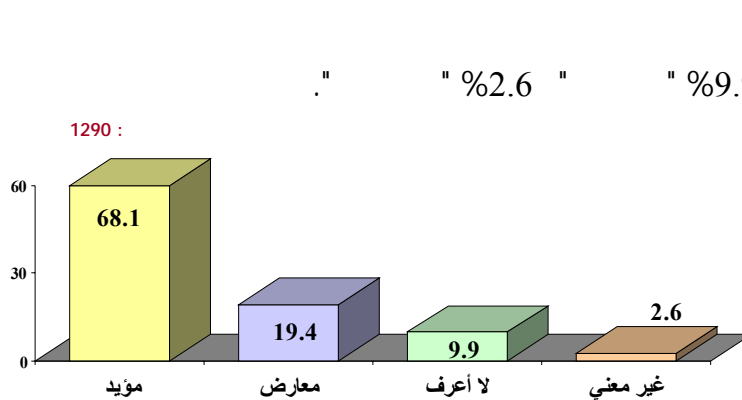
%83.5  
%8  
" %5.3  
" %3.2 "



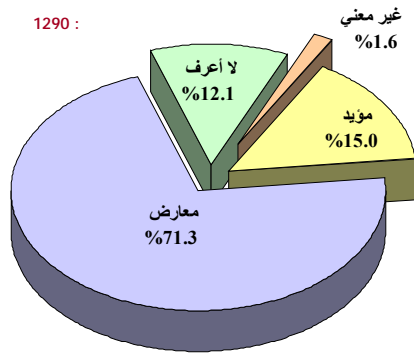
.1967  
%35.6  
" %10.8  
" %50.8  
" %2.8



%54.8  
" %18.8  
" %20.2  
" %6.2 "



%68.1  
" %2.6  
" %9.9  
" %19.4

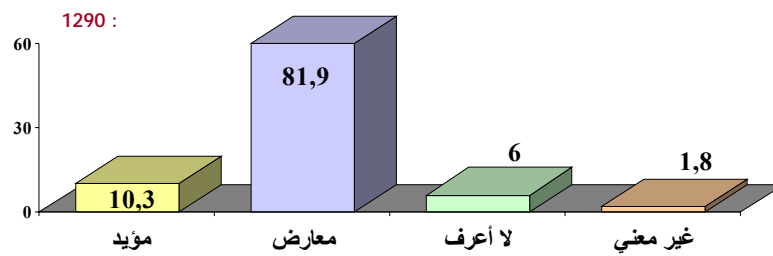


%71.3  
%15  
." " %1.6 " " %12.1

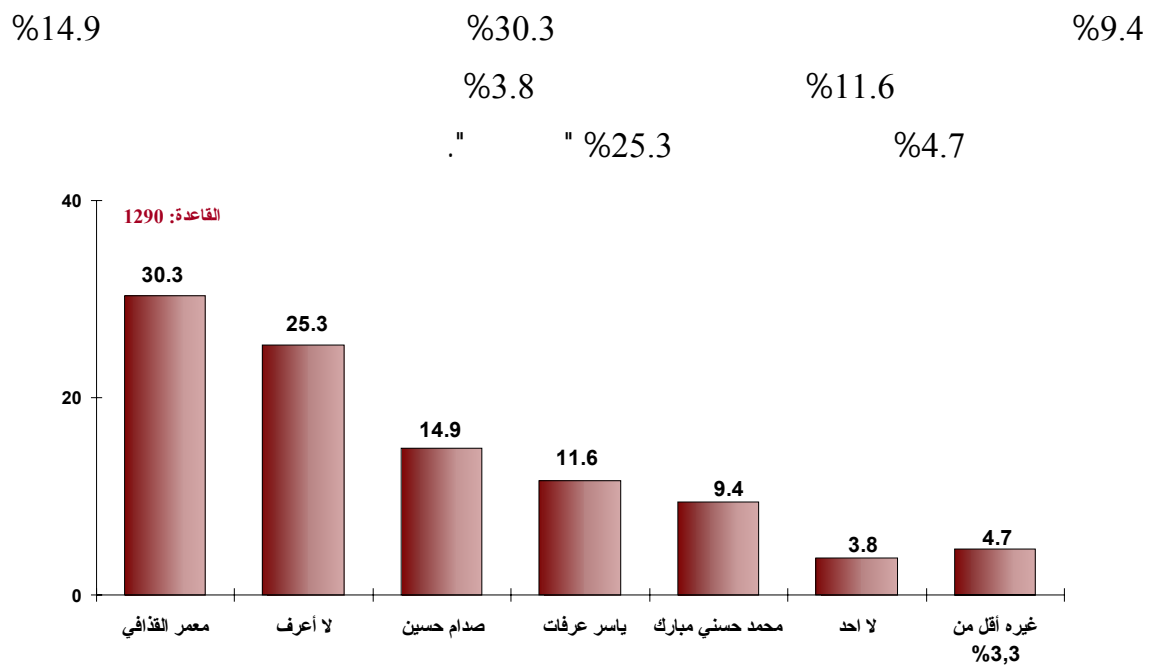
\_\_\_\_\_ -7

28

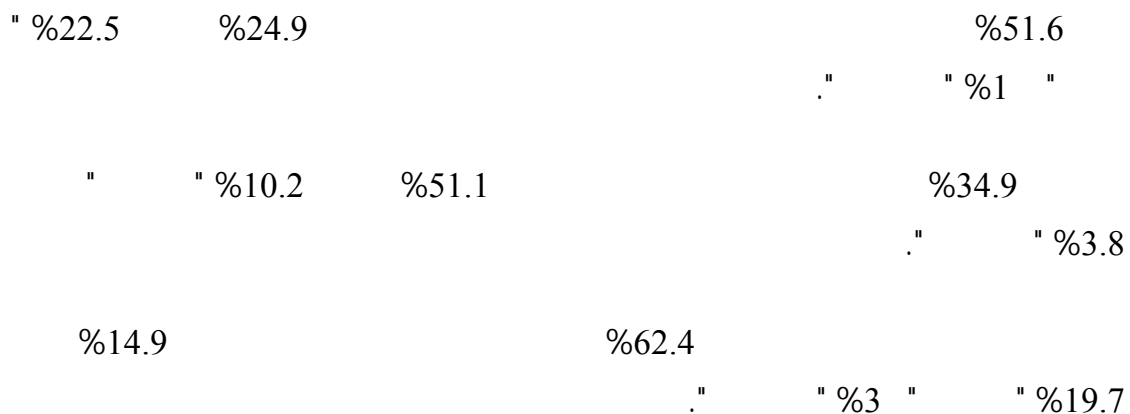
%10.3 %81.9  
." " %1.8 " " %6

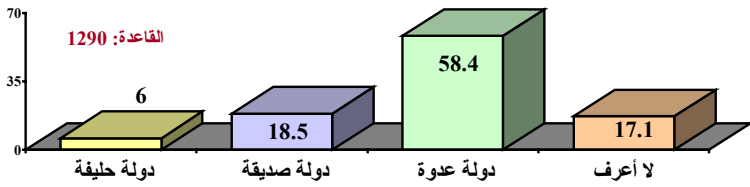


-1

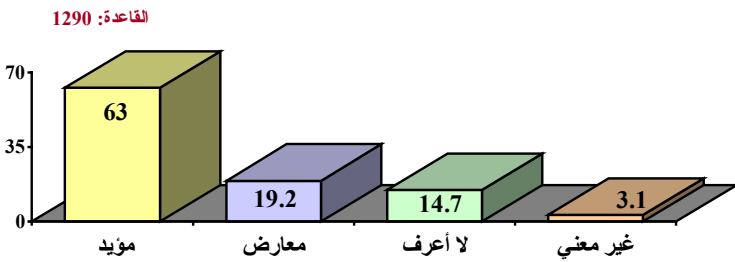


-2

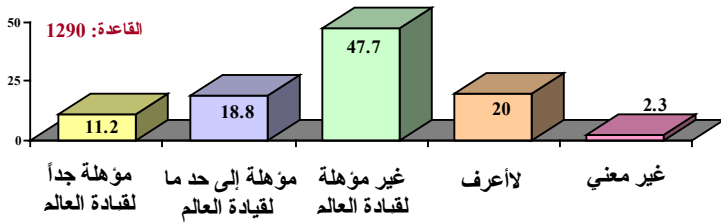




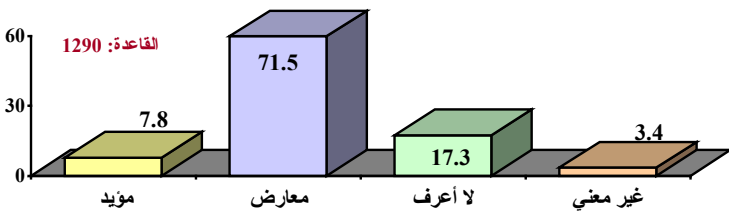
58.4%  
18.5%  
17.1%  
6%



63%  
19.2%  
14.7%  
3.1%



47.7%  
18.8%  
11.2%  
20%  
2.3%



71.5%  
17.3%  
7.8%  
3.4%

28.2%

63.3%  
1.2%  
7.3%

