



INFORMATION  
*international* SAL

RESEARCH CONSULTANTS

**Survey of Parents' Opinion at the Beginning of the Academic Year  
2001-2002**

An opinion poll was conducted with the parents of school students (600 families in Greater Beirut) that entailed their professional and social status, their opinions on the new curriculum, schooling tuition, differences between public and private schools.

In addition, a comprehensive field survey was carried out to pinpoint the schooling situation in Lebanon.

11 Pages



2001

1-5

33

600

Information International

600

.2001

5 -1

2002 - 2001

%3.5

%29.5

%67

%42

."

" %1.1

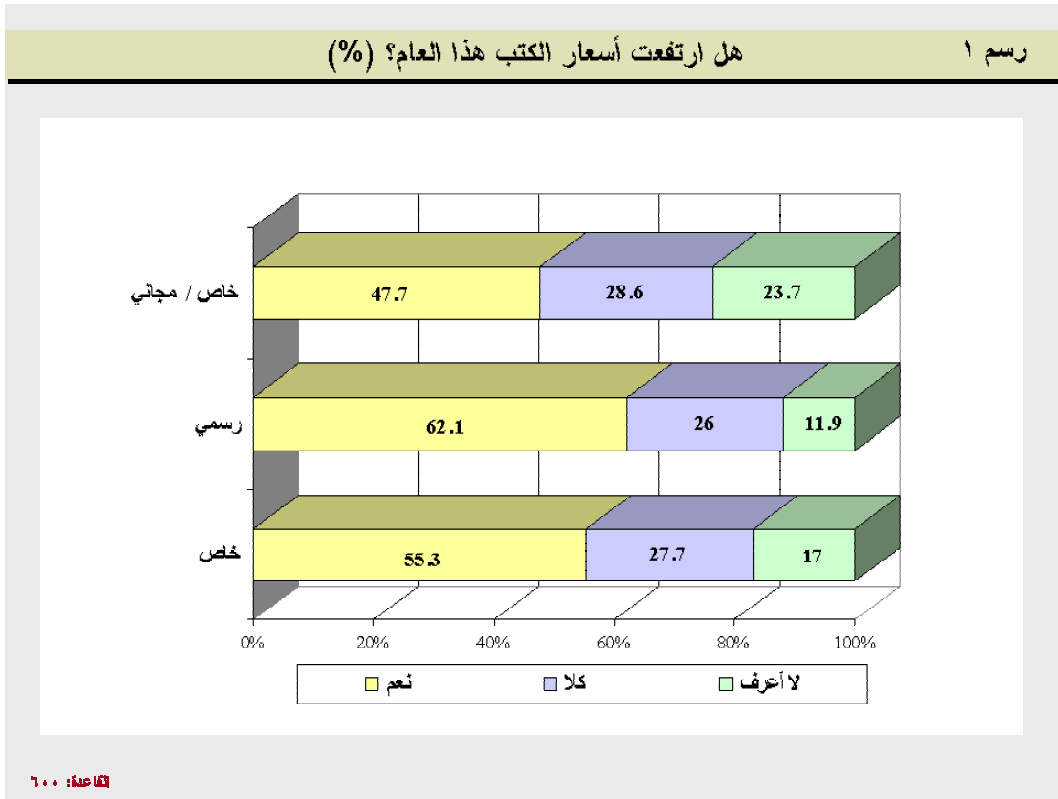
%56.9

%.71.4

%28.6

- 1

: %55  
(%26) %62.1  
%55.3 " %11.9  
%47.7 " %17 (%27.7)  
.(1 ) " %23.7 %28.6



%56

" %4 %46

%.81.2

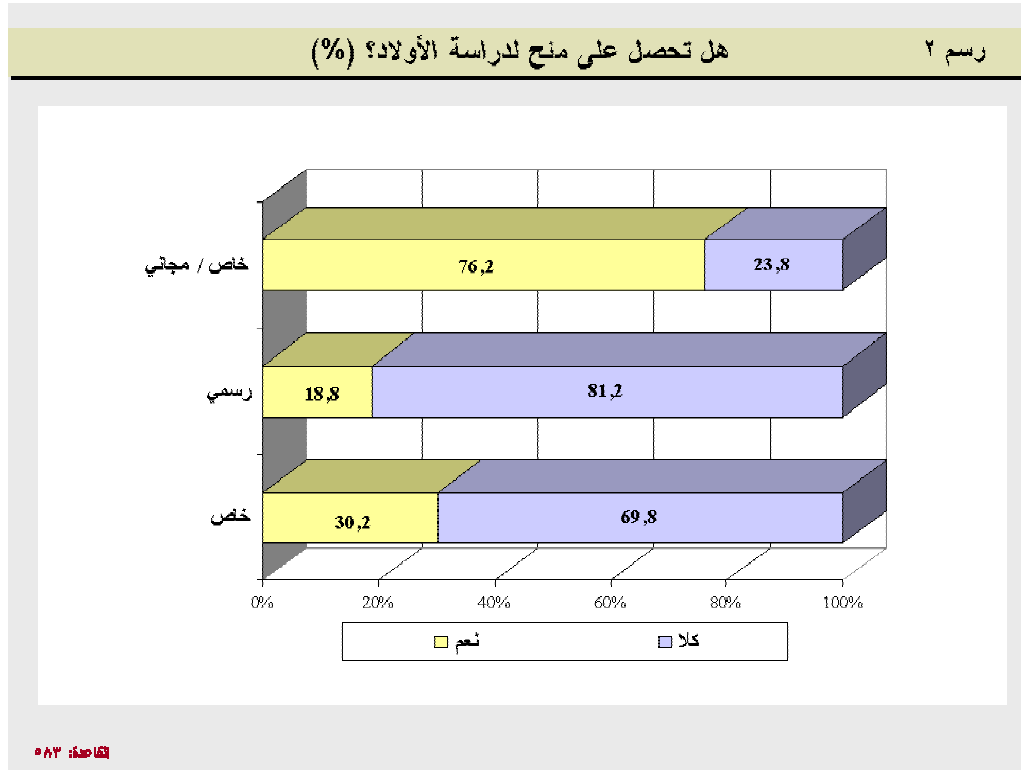
%18.8

%.69.8

%30.2

(2) %23.8

%76.2



-4

%48.6

%7.3

%41.8

.%18.1

%9.5

%21.2

%69.7

.%16.6

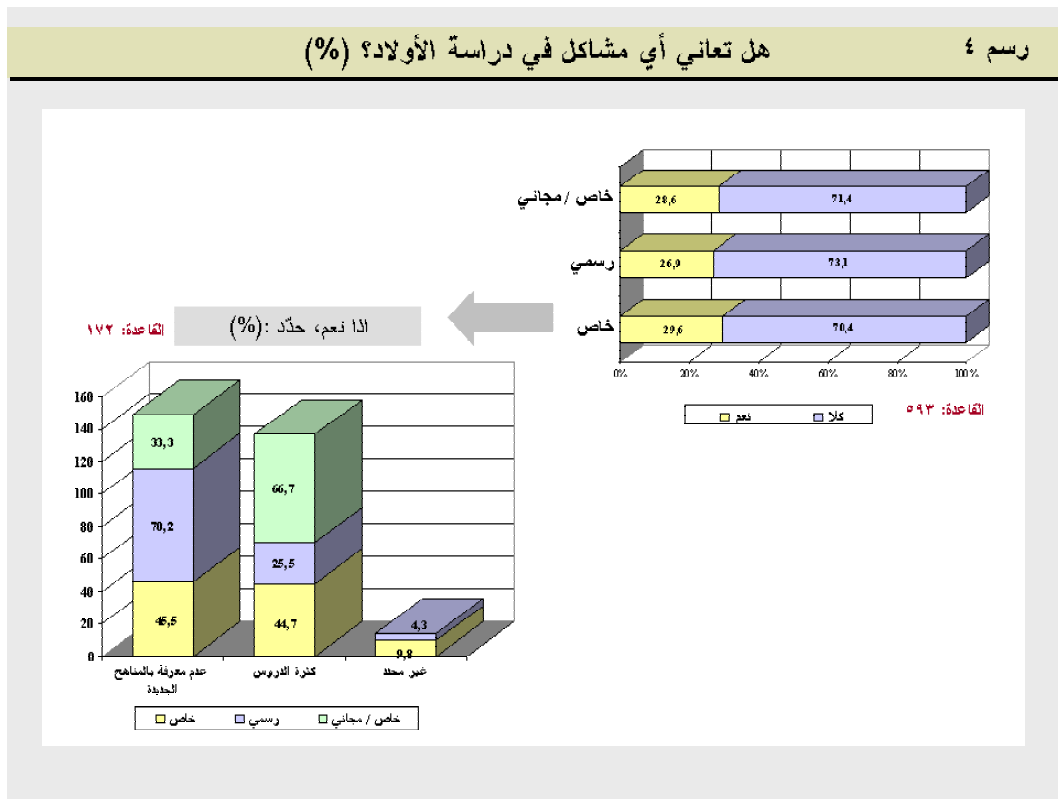
%9.5

%23.8

%9.5

.%4.8

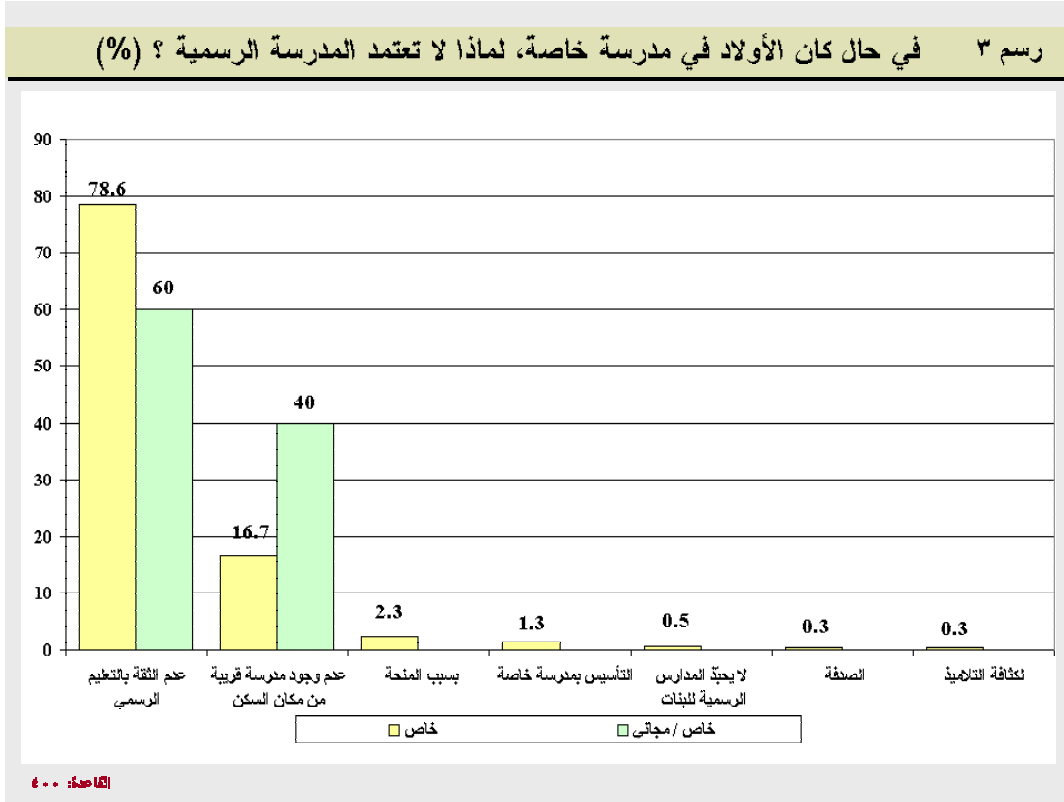
هل تعاني أي مشاكل في دراسة الأولاد؟ (%)  
 : %78.6  
 " %1.3 " %2.3 %16.7  
 (... ) (3) .



) %24.7 %75.3  
 .(

%51.4 %48.6  
 (%27.5) (%69.2) ( 140 ) (%3.3)  
 (%15) : %56.2 %43.8  
 (%19.6) (%65.4) ( 200 )  
 (%14.3) : %66.7 %33.3  
 .(%85.7)

(%45.6) ( %71.7 %28.3 ) (%49.6) (4 ) (%4.8).



-7

%37

%64.4

%57.1

%63

%35.6

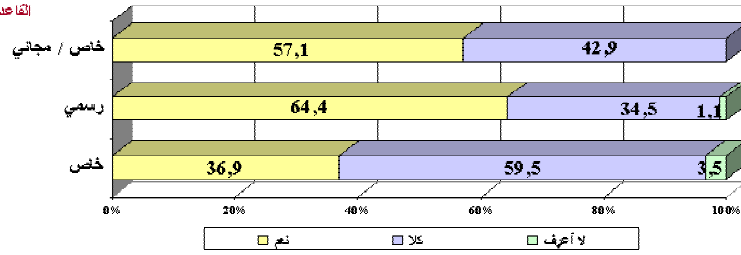
(5 )

%42.9

## هل تتولى توجيه أولادك مستقبلاً إلى العلوم المهنية؟ (%)

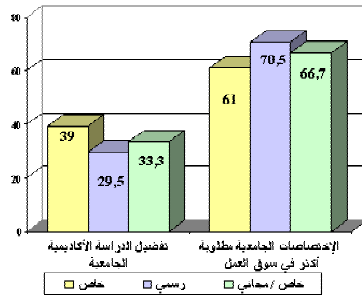
رسم ٥

القاعدة: ٦٠٠



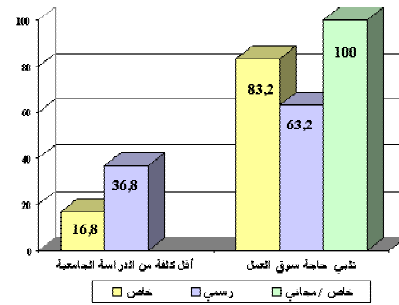
القاعدة: ٣١٩

إذا كلاً، حدد السبب: (%)



القاعدة: ٣٦٣

إذا نعم، حدد السبب: (%)





56529	56099	55955	50056	42.340	37.570	35796	35300	34977	
<b>75647</b>	<b>74547</b>	<b>73524</b>	<b>66340</b>	<b>55848</b>	<b>48064</b>	<b>45776</b>	<b>44651</b>	<b>44207</b>	

-3

( )

24

:

(3)

(3)

01-00	00-99	99-98	98-97	97-96	96-95	95-94	94-93	93-92	
64312	62602	59728	51661	49755	46204	41595	36503	45760	
41898	41267	41712	35669	38202	36242	37434	38307	42860	
<b>106210</b>	<b>103869</b>	<b>101440</b>	<b>87330</b>	<b>87957</b>	<b>82446</b>	<b>79029</b>	<b>74810</b>	<b>88620</b>	

%51.6

%60.5

(%6.8)

(%9.1)

(%3.8)

(%4.7)

93 - 92

(%4.8)

18

(%11.3)

-4

.(4)

(4) \_\_\_\_\_

01-00	00-99	99-98	98-97	97-96	96-95	95-94	94-93	
3880	3826	3620	3744	3493	3510	3435	3086	
5030	4994	5297	5074	4777	3930	3758	3923	
36720	36192	3526	32937	30685	30675	32335	29747	
42230	42423	42325	41986	34720	34627	35600	33011	
3623	3443	3298	2956	2508	2025	1776	1630	
7130	7035	6534	6088	5237	4957	4289	4035	

)

(4) (1)

(

17

9.6

5.2

11.6

8

8.3

16.5

\_\_\_\_\_ -5

1993

.(5)



( ) (5) \_\_\_\_\_

2000	1999		1998		1997		1996		1995		1994		1993		
496.8	460.3	450.1	482.5	455.6	531.2	363	395.1	314.4	316.2	321.6	348.2	233.7	182.6	178.4	
44.2	42.3	43	41.4	32.6	45.1	29.3	31.4	32.7	20.8	40	20.2	25.2	13.6	13.6	
165.5	170	167.2	199.5	195.3	160.7	139	75.8	60.5	108	105	106	8.2	54.5	60	
706.5	672.6	660.3	723.4	68.35	737	531.3	502.3	407.6	445	466.6	474.4	339.1	250.7	252	
8590	8502	8395	7269	7320	86.1	6433	8014	6458	5353	5630	4736	41.6	2096	3390	
%8.22	%7.91	%7.86	%9.95	%9.33	%9.33	%8.56	%6.26	%6.31	%8.31	%8.28	%10.01	%8.25	%11.96	%7.43	

9900

812.6

2001

. % 8.20

4512

%78.6