



INFORMATION  
*international* SAL

RESEARCH CONSULTANTS

## **Elimination of the Surplus of Employees in Public Administration**

The survey aimed at gauging the opinion of Greater Beirut residents about the issue of elimination of the surplus of employees from the public administrations in Lebanon and their solutions to the economic crisis the country is currently experiencing.

19 Pages



INFORMATION  
*international* SAL

RESEARCH CONSULTANTS

آذار 2001

( 600)

.

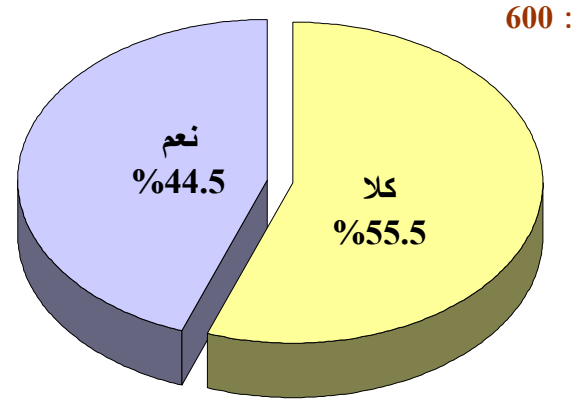
. %42.3 %57.7 :

(42.3) (14.9)

.(31.5) (%11.3)

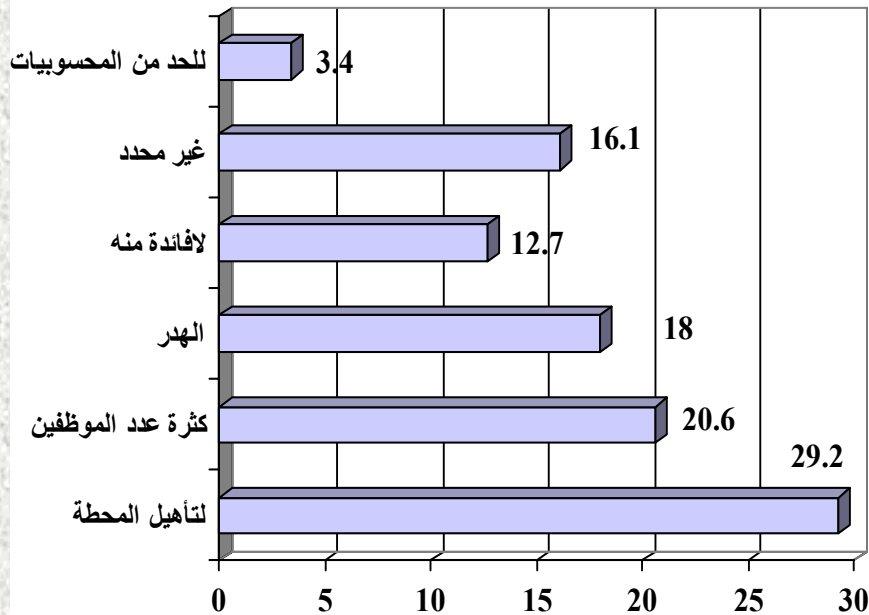
.2001 13-12

(%)



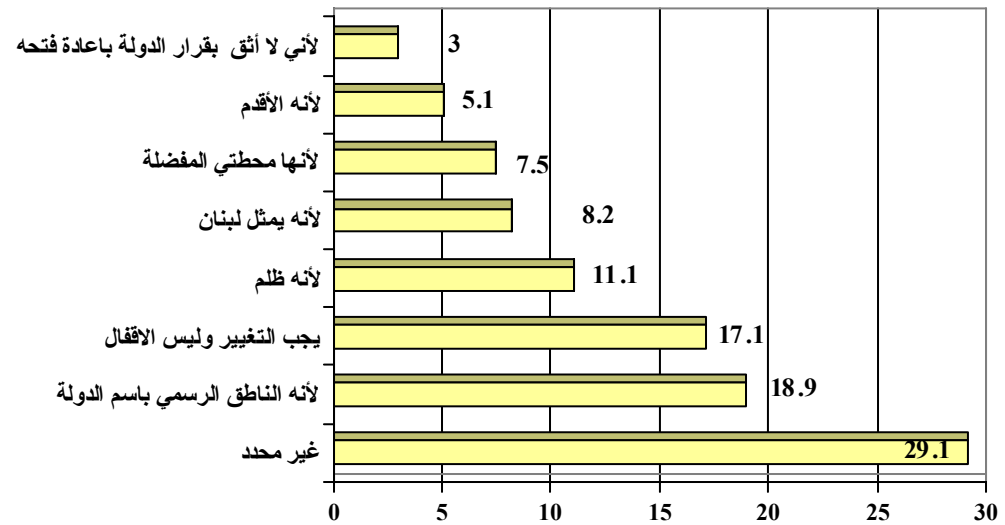
القاعدة: 267

(%)

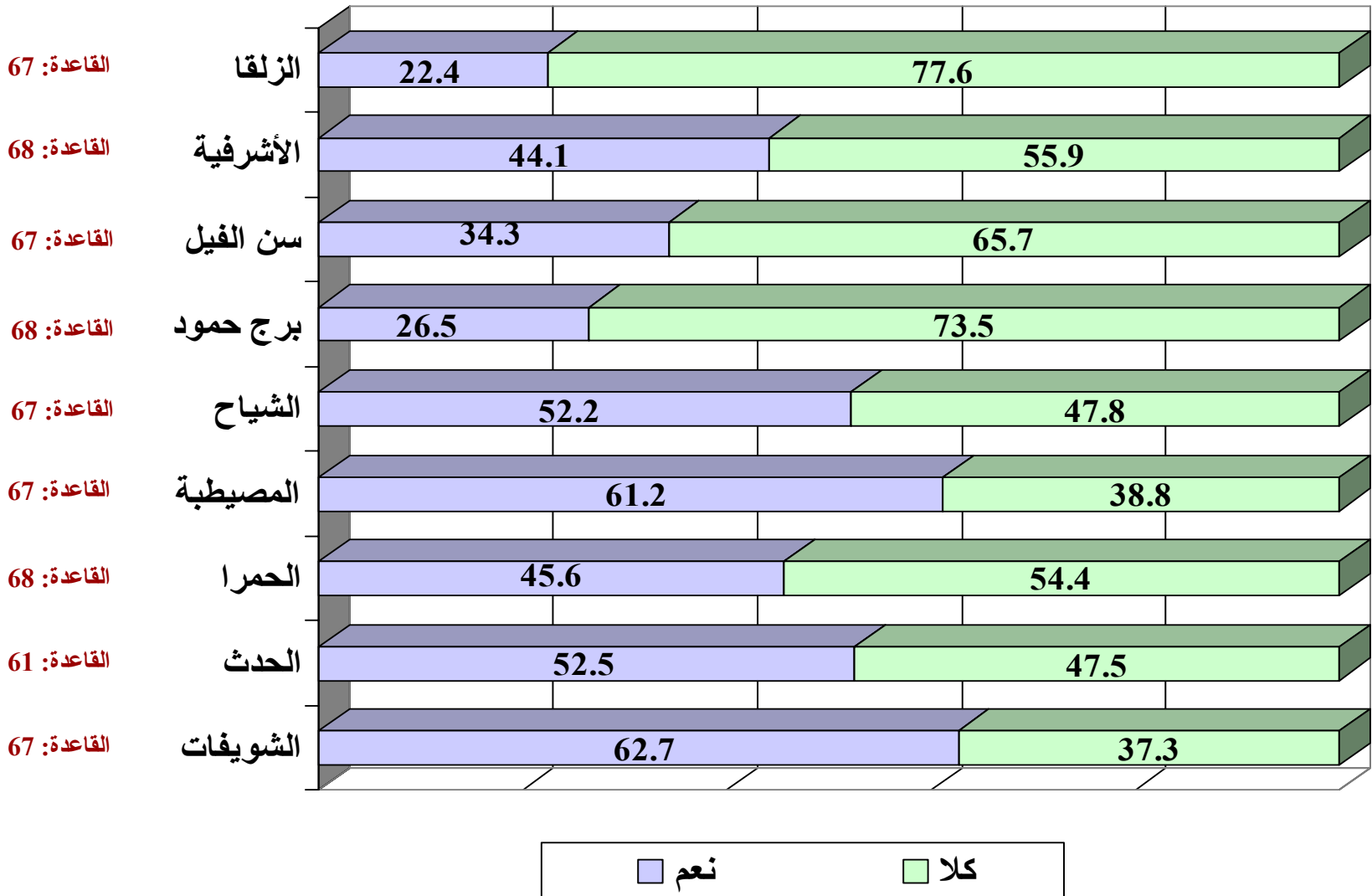


(%)

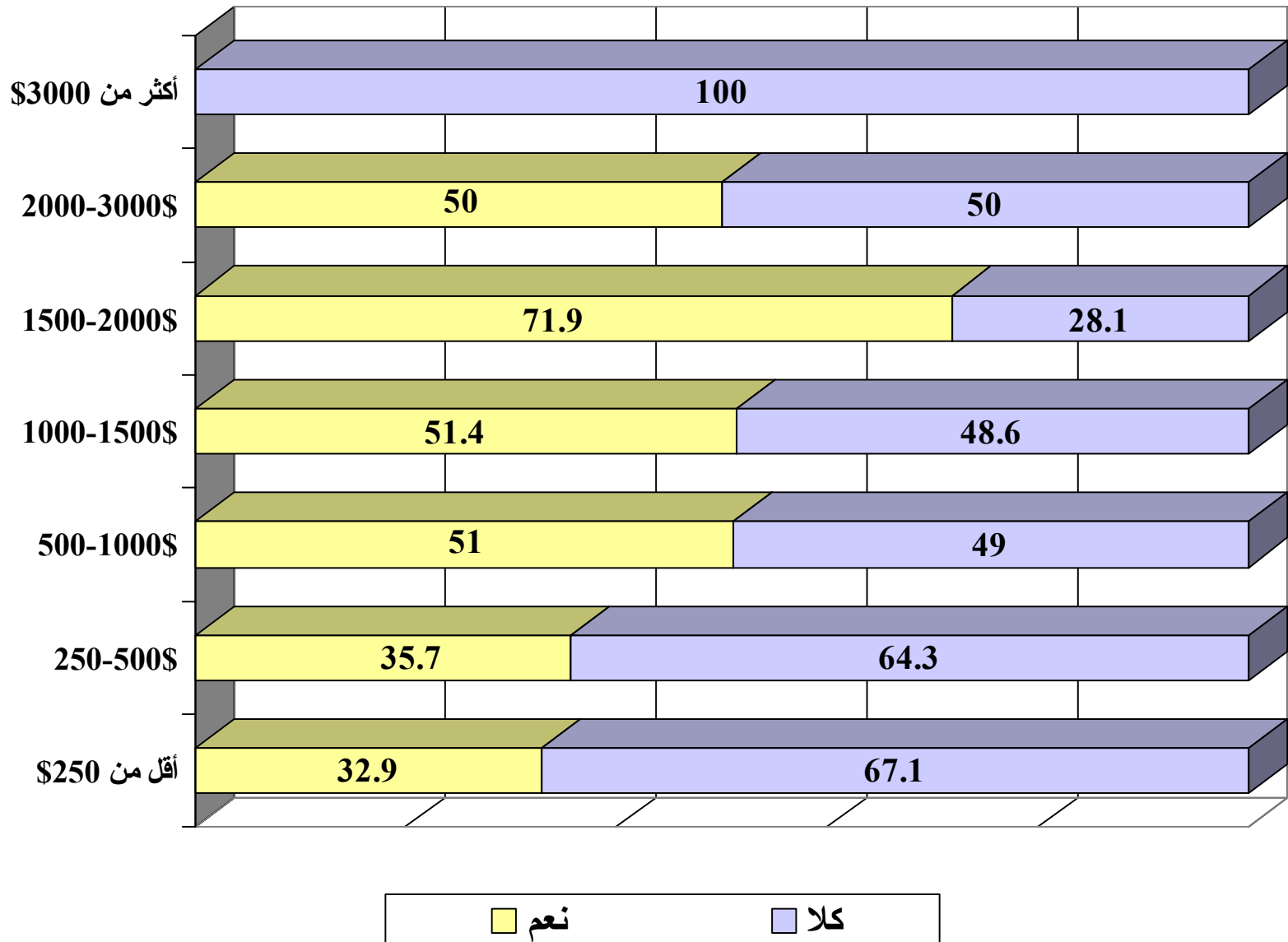
333:



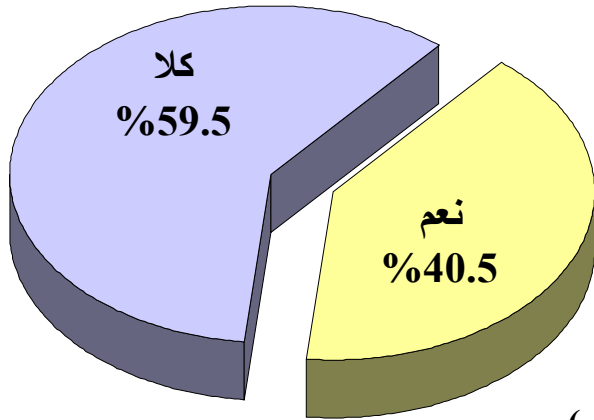
(%) ( )



( ) ( % )

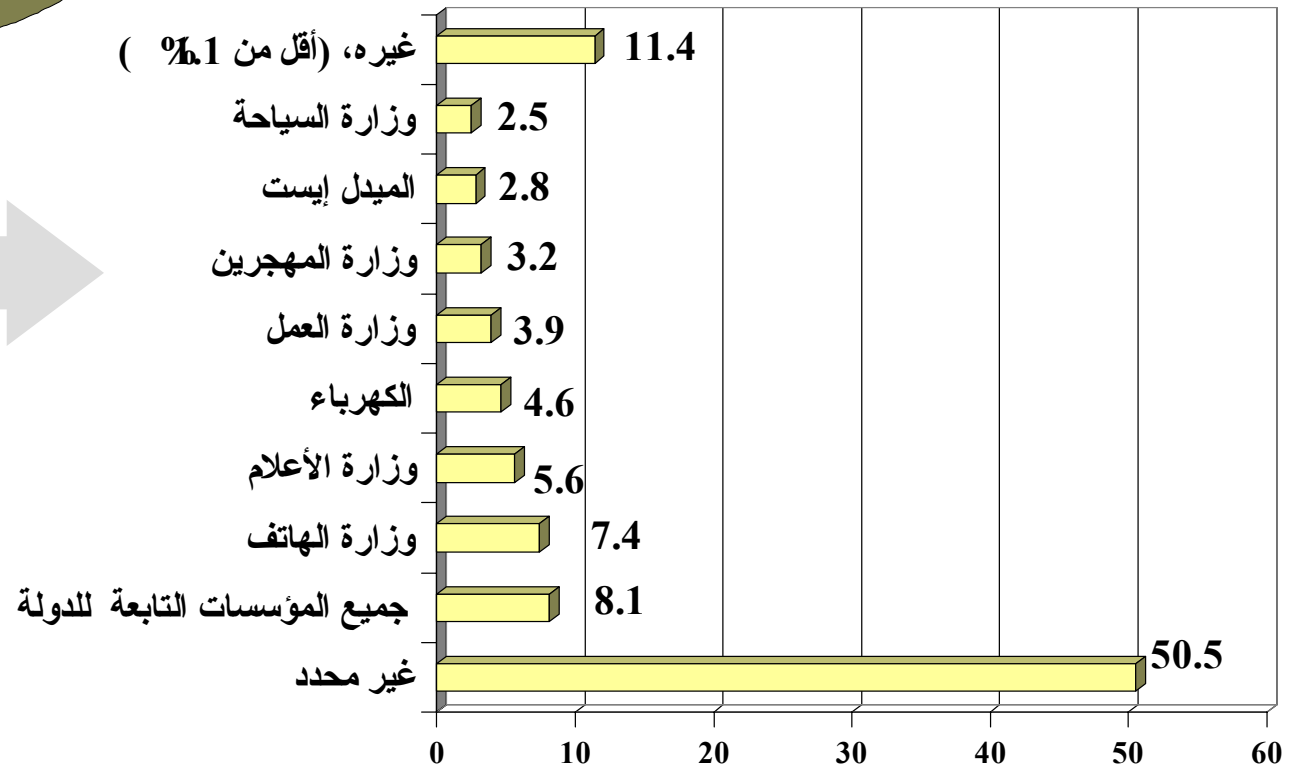


(%)

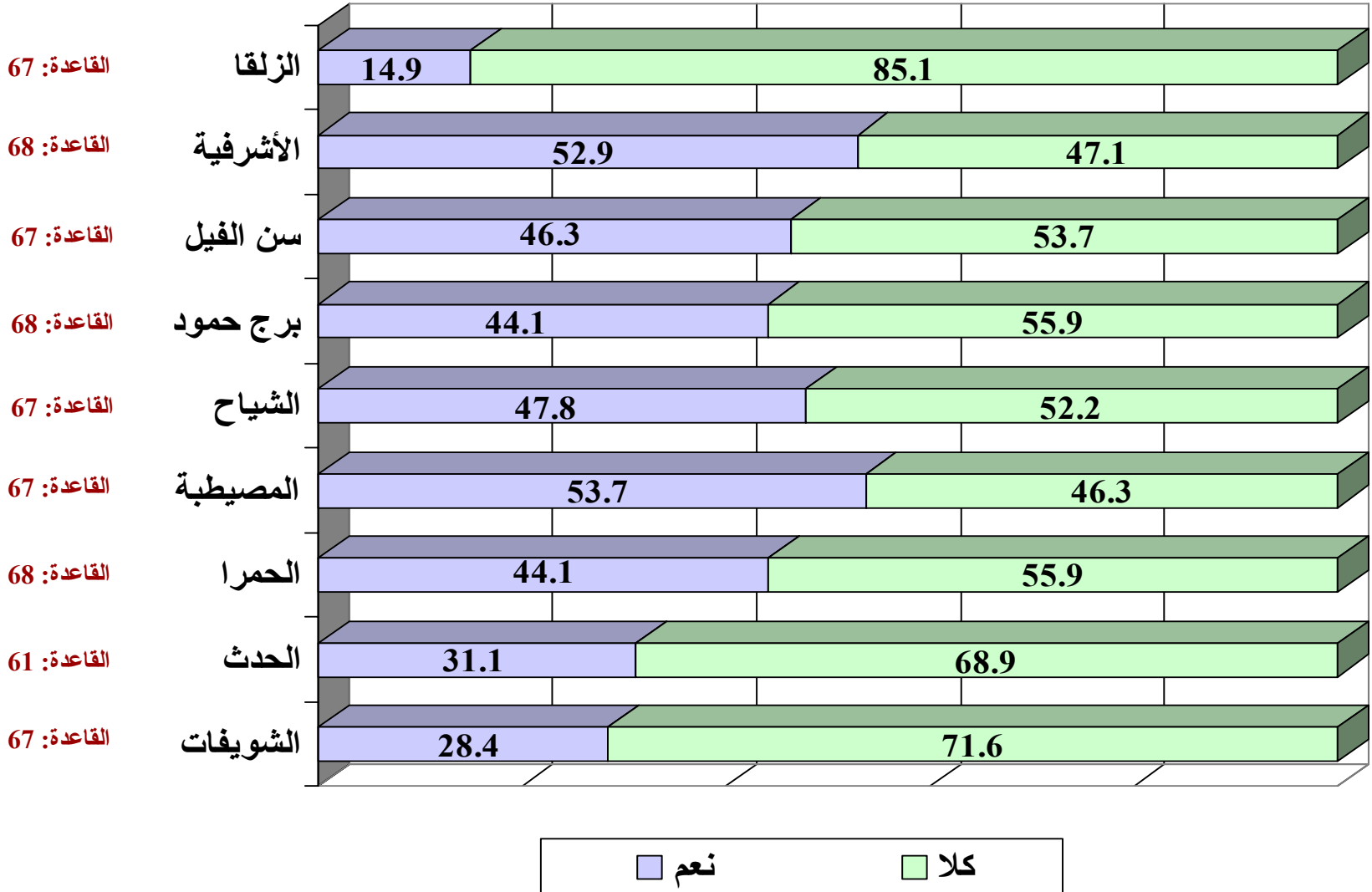


(%) :

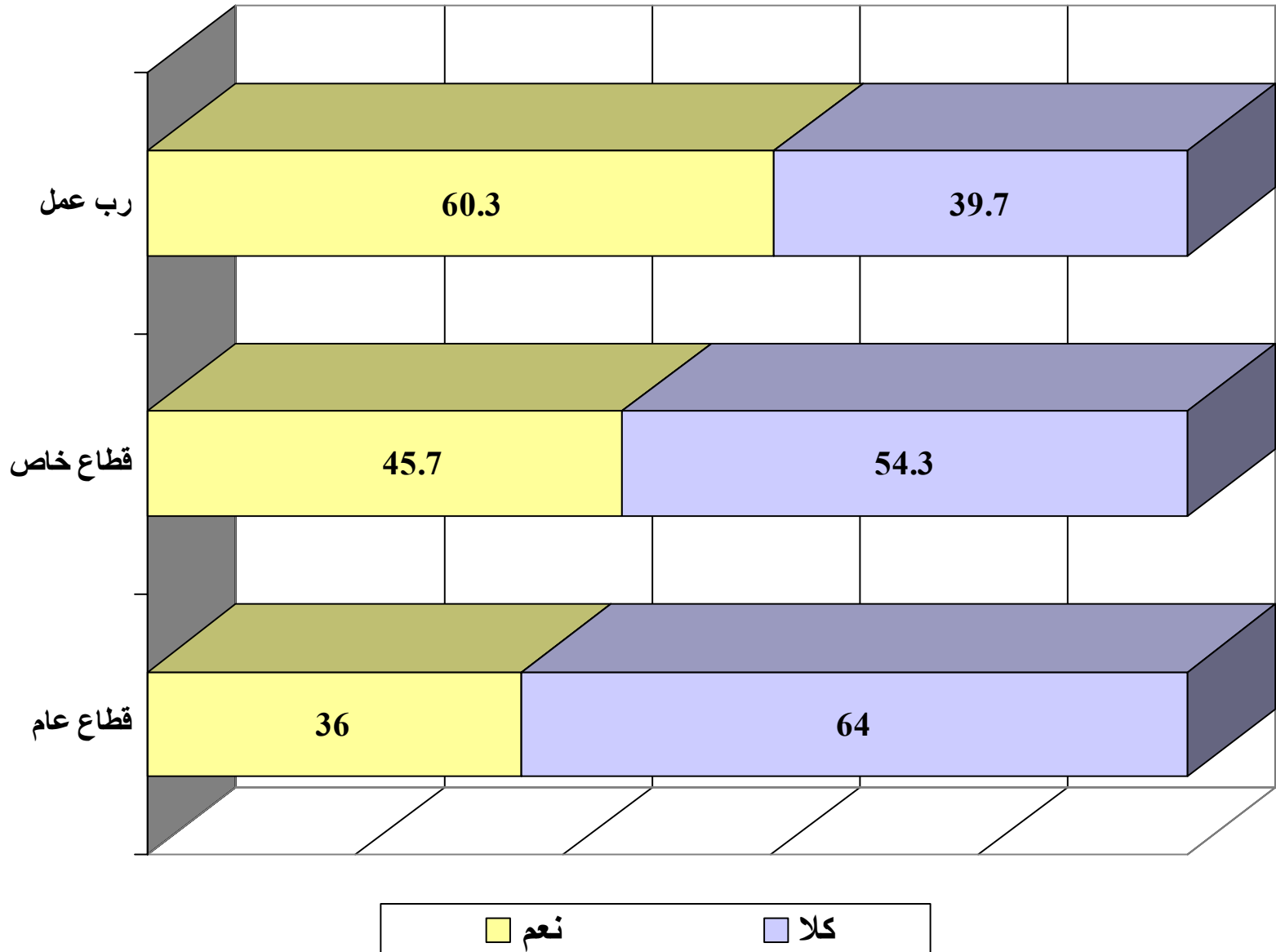
240:



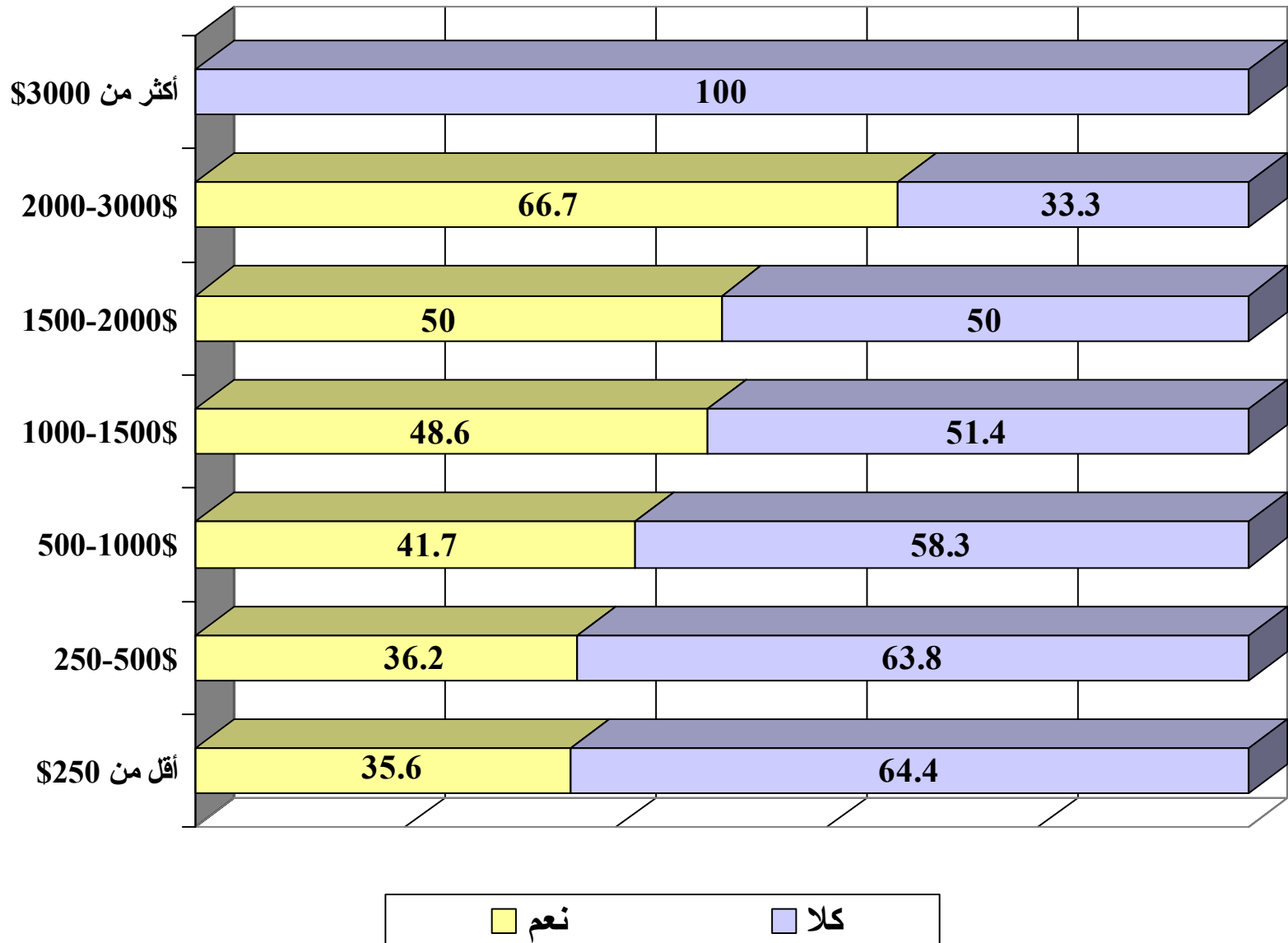
(%) ( )



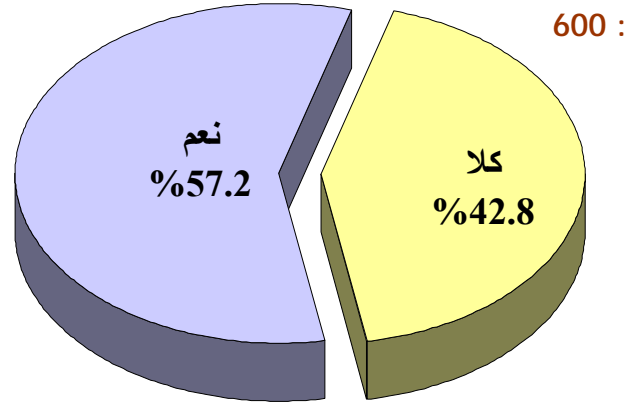
(%) ( )



(%) ( )

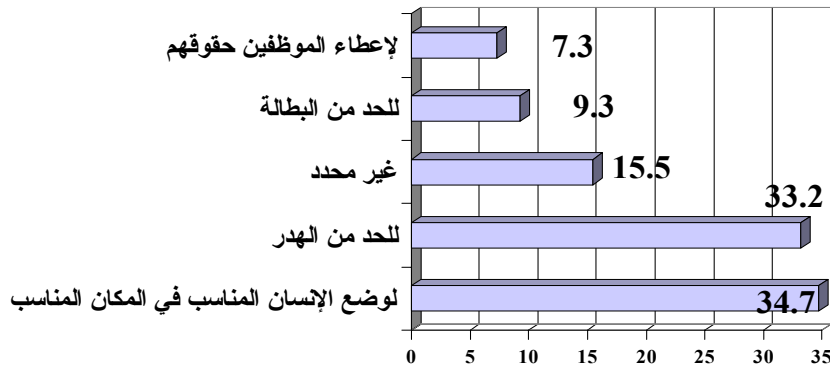


(%)



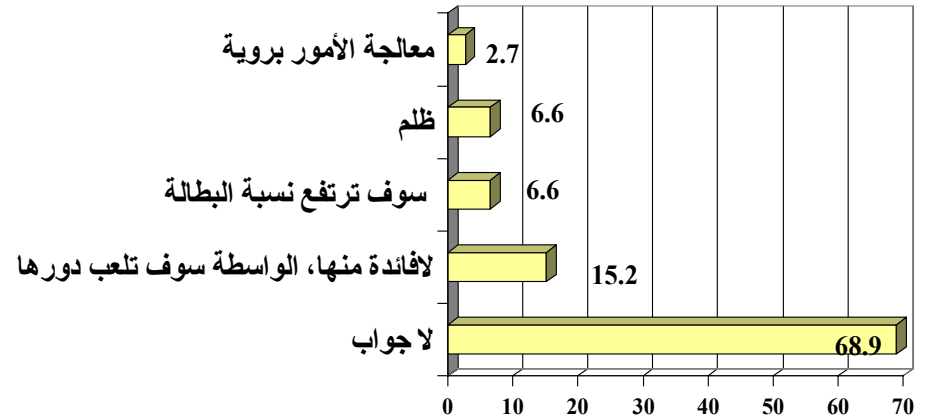
القاعدة: 343

(%)

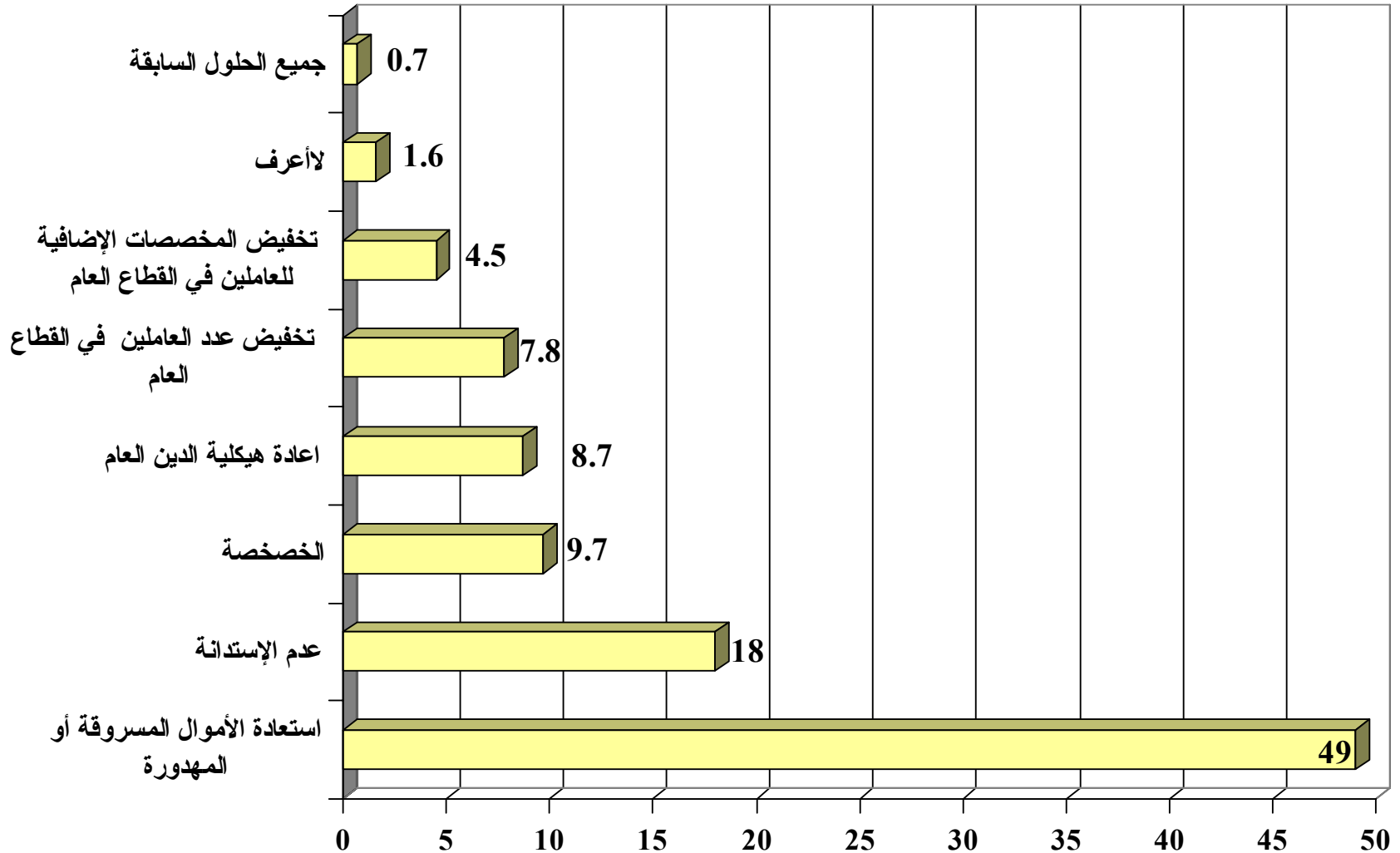


(%)

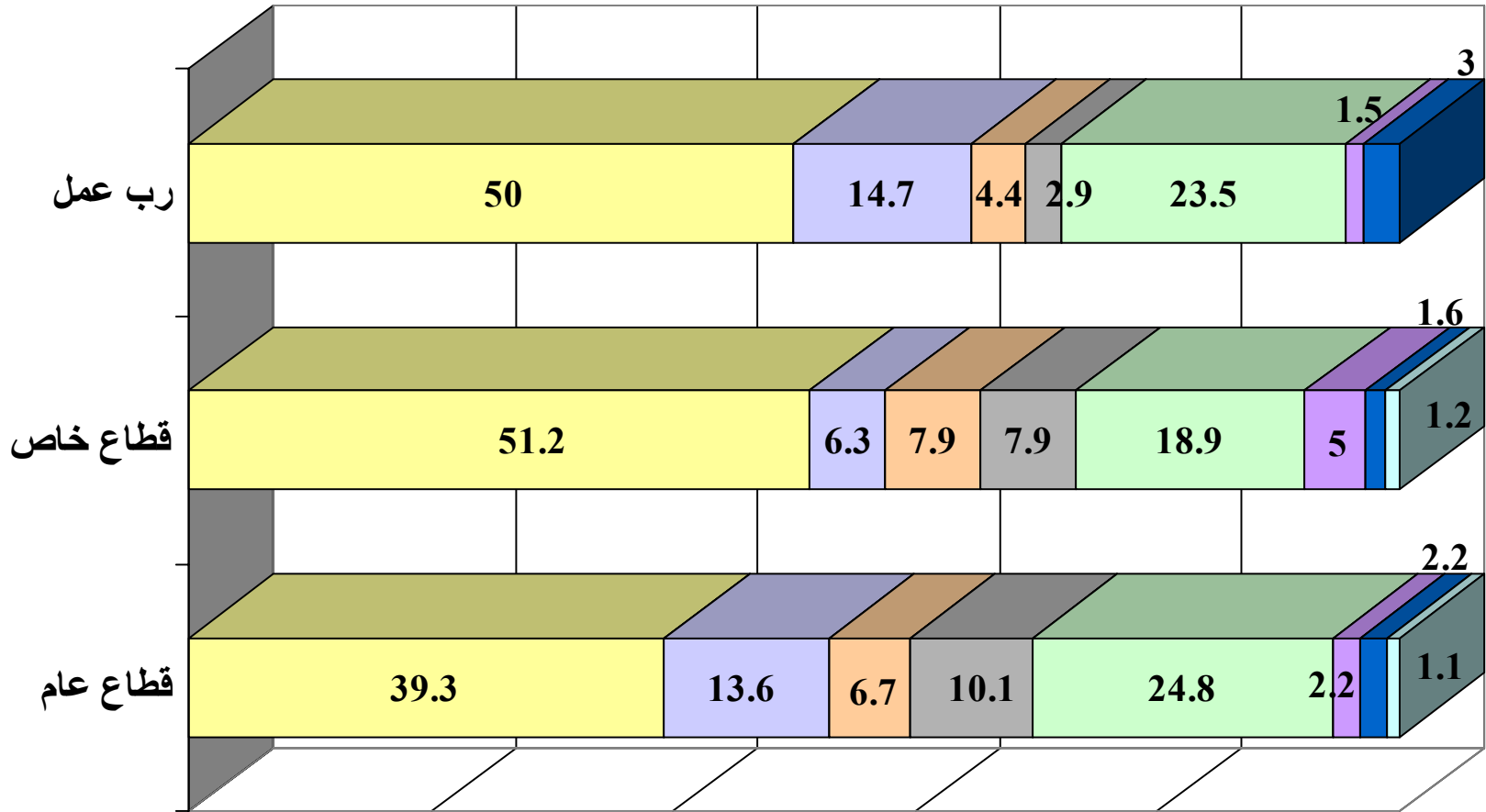
257:



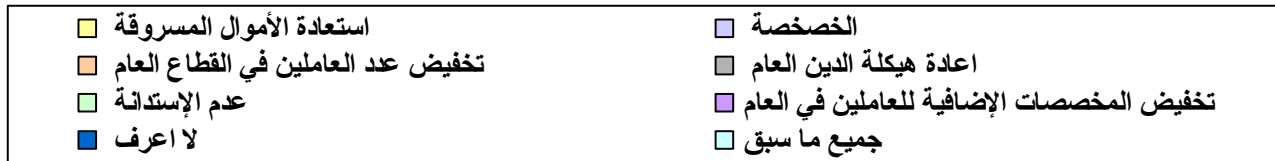
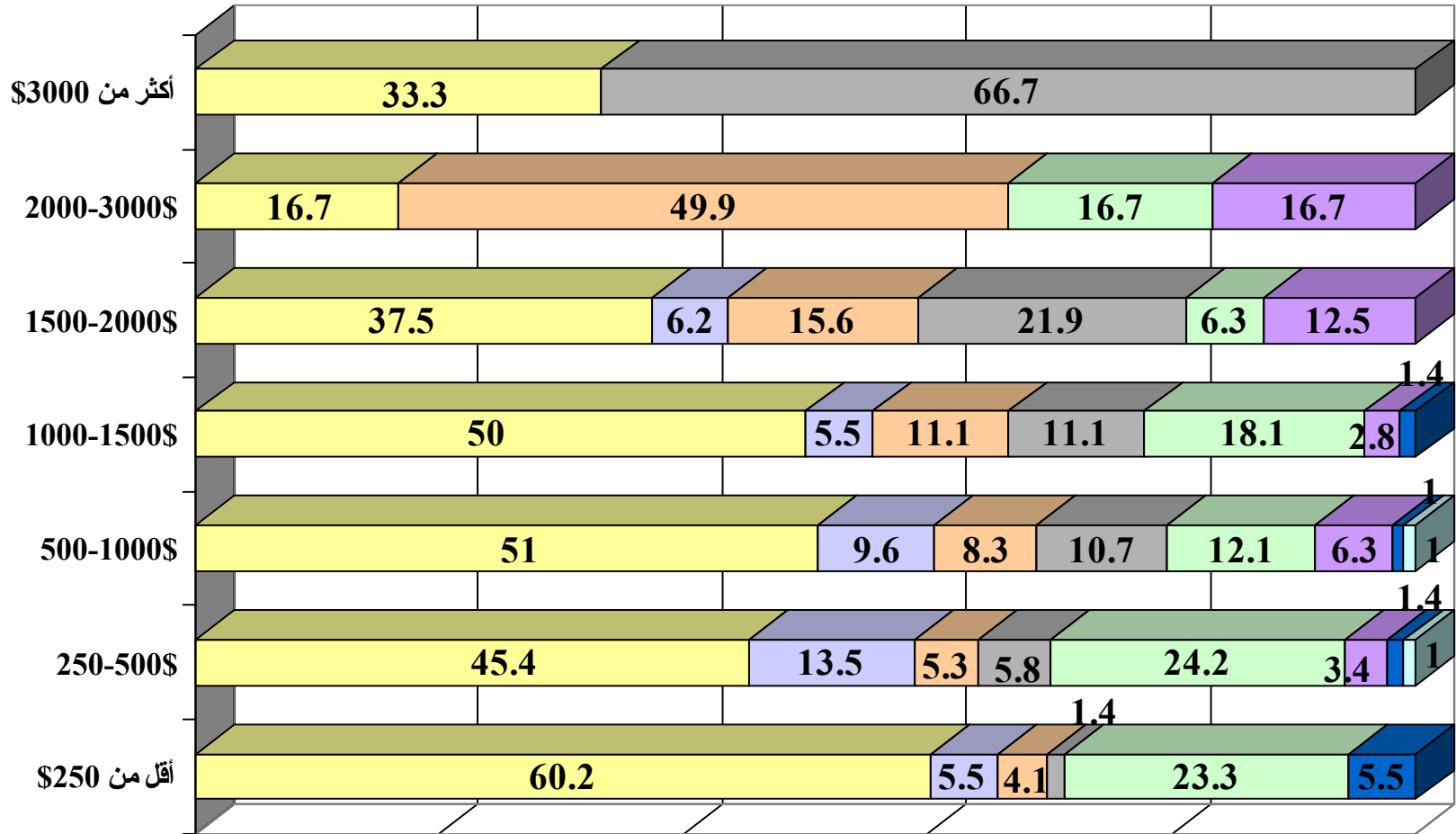
(%)



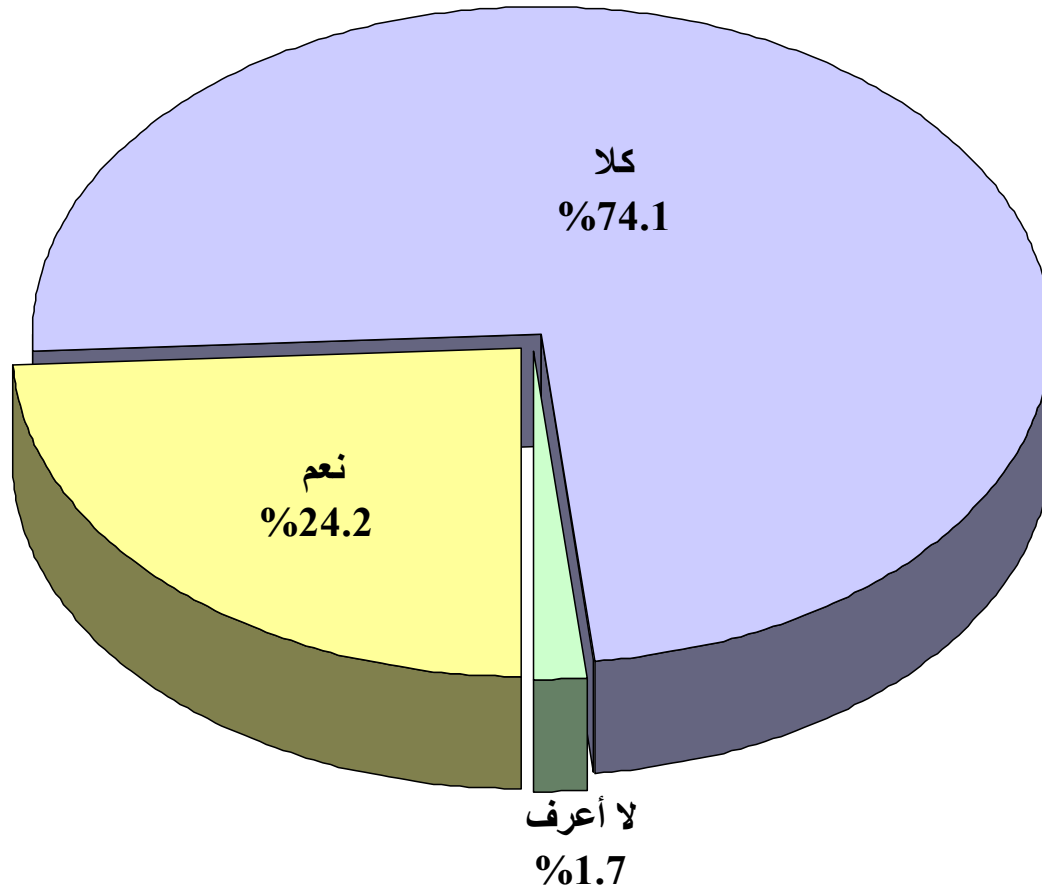
(%) ( )



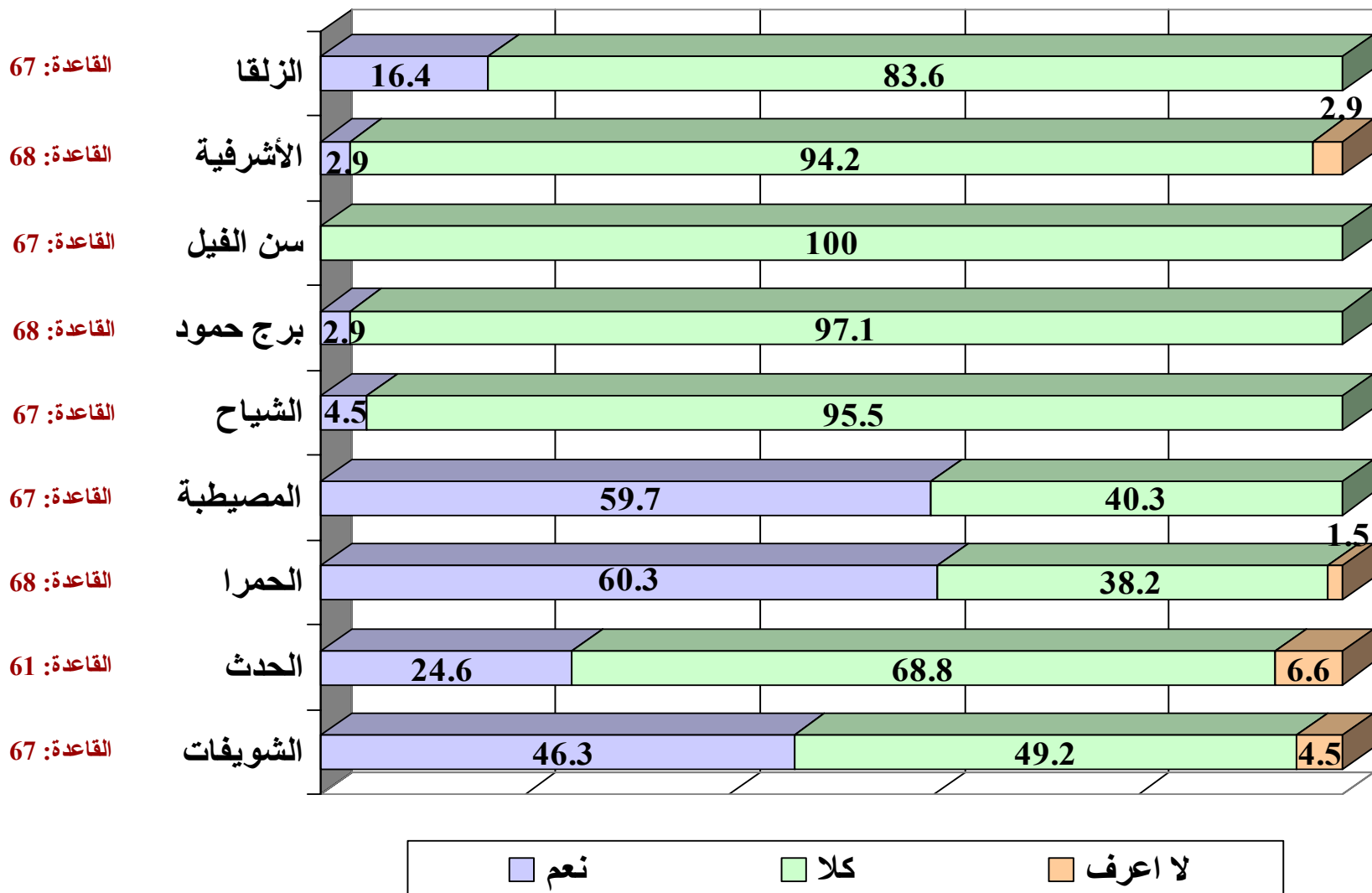
(%) ( )



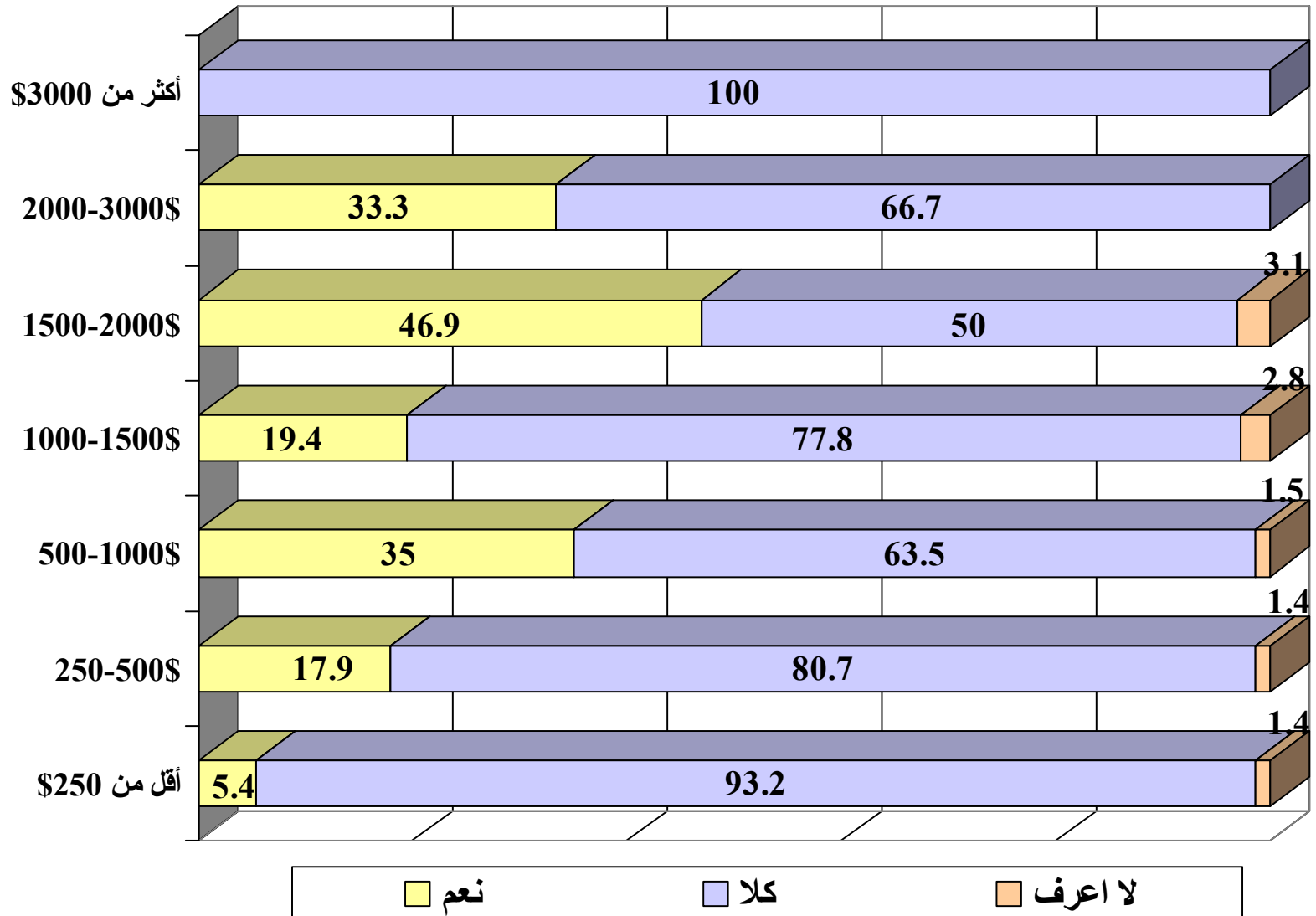
(%)



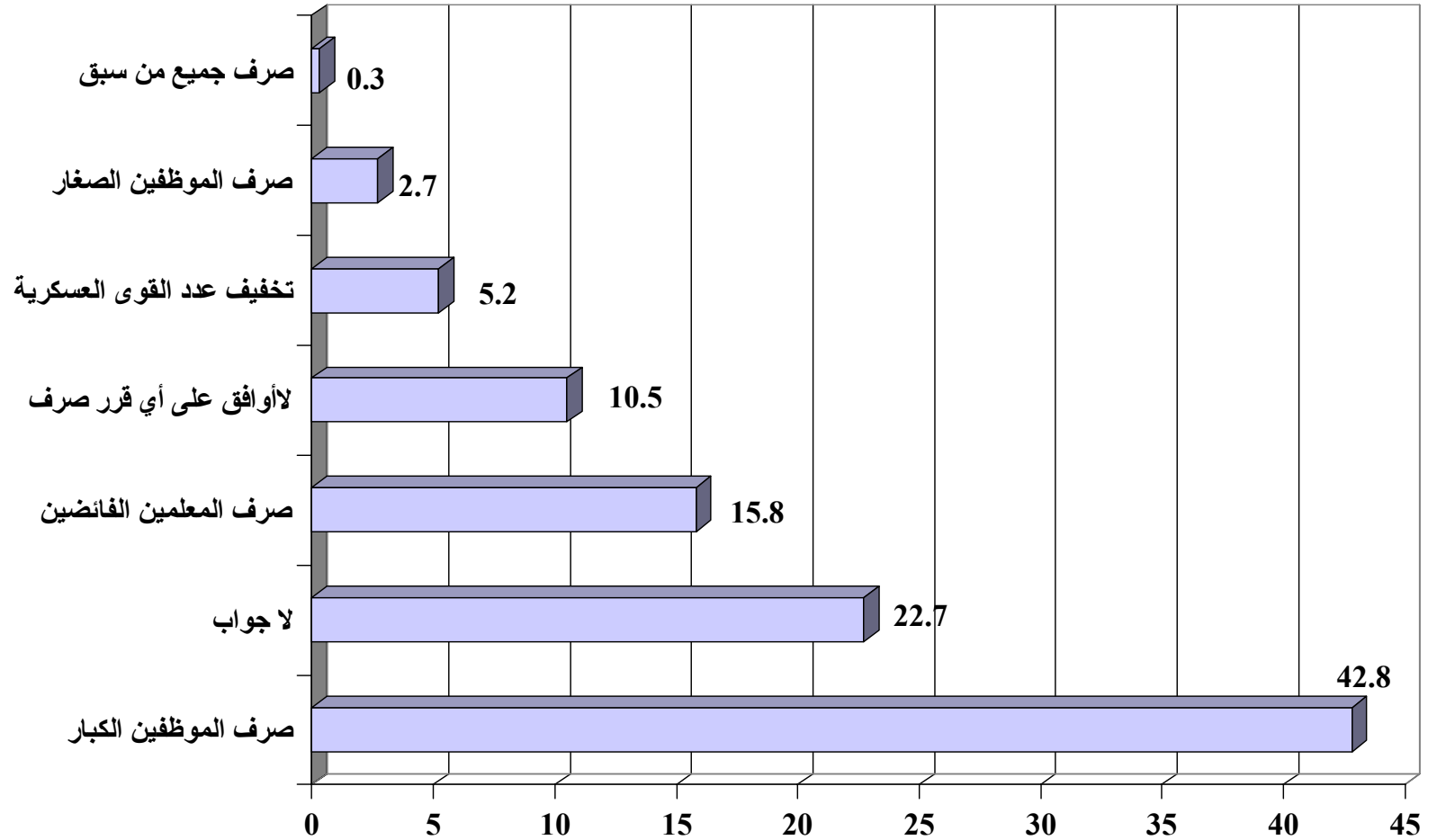
(%) ( )



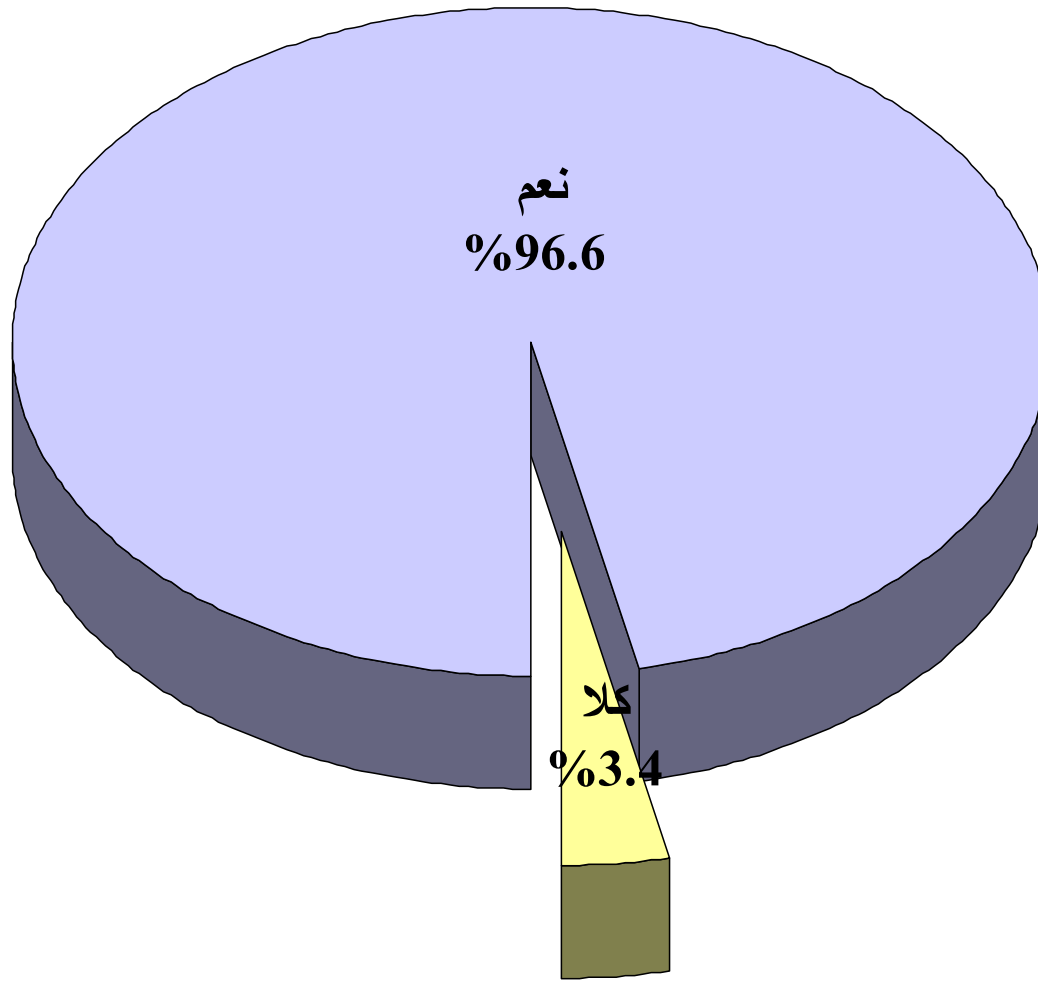
(%) ( )



(%)



(%)





***Information International*** SAL

*P.O. Box: 11-4353 Beirut, Lebanon*

*Tel: 961-1-983008/9 Fax: 961-1-980630*