

(2) "

"



:

.I

-1

%48.5

%51.5

%12

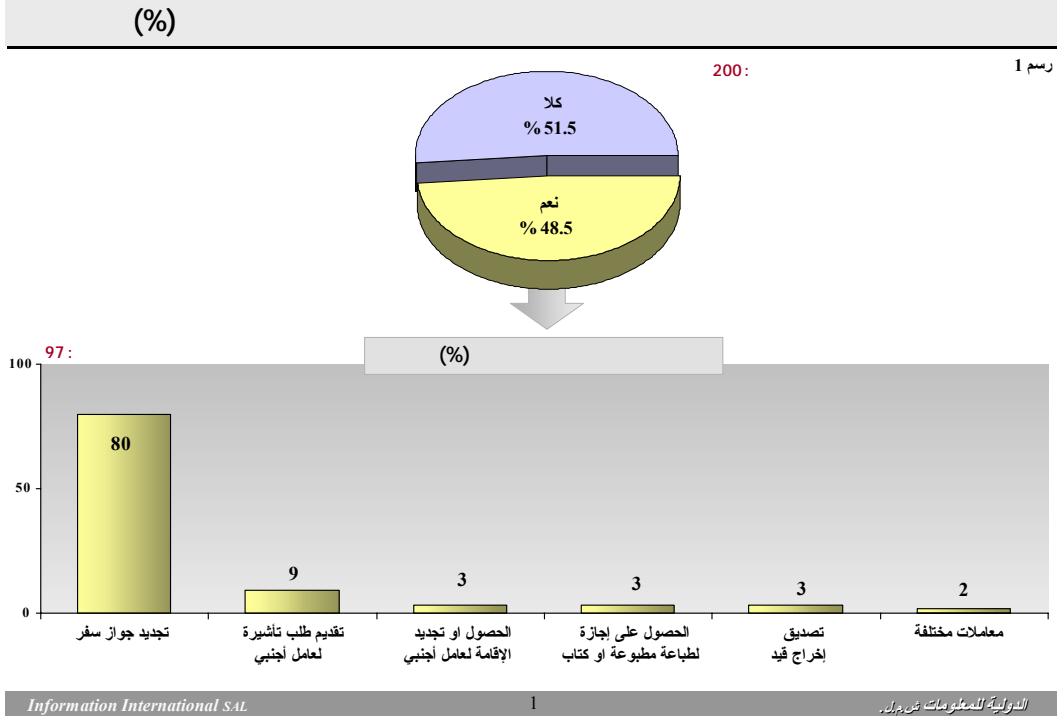
%80 :

%3

.(1)

%2

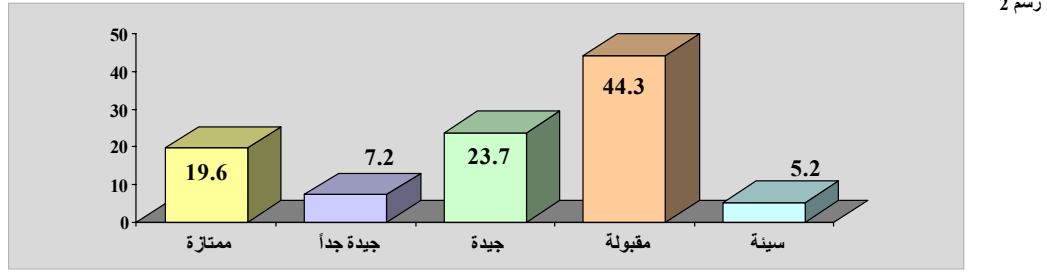
%3



-2

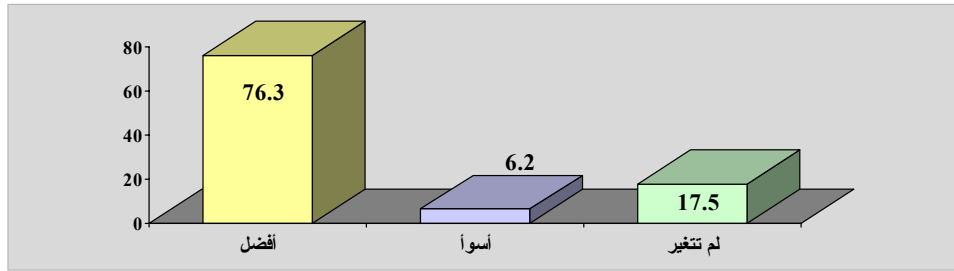
%7.2	%19.6	%23.7	%44.3
%17.5	%76.3		%5.2
		(2)	%6.2

(%)



97 :

(%)



97 :

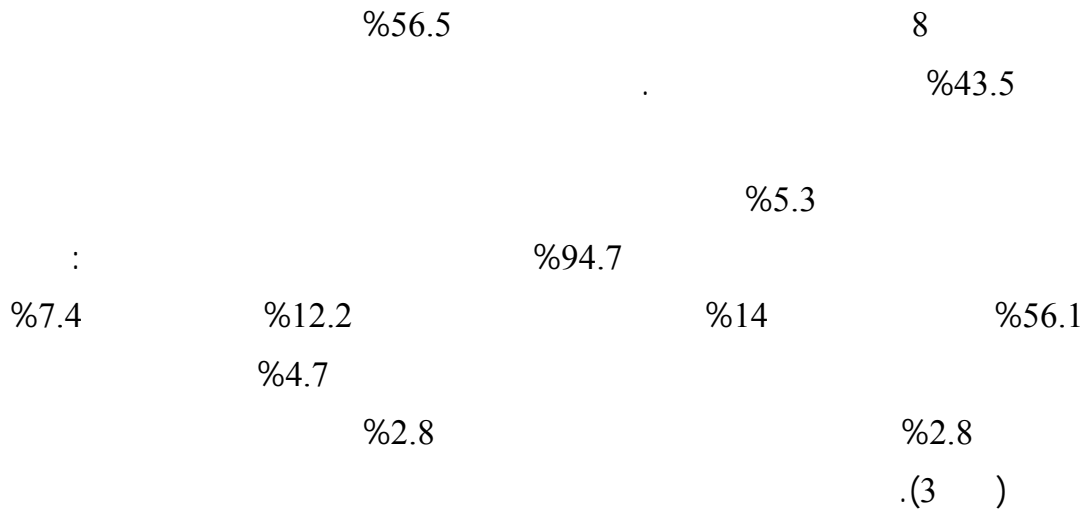
Information International SAL

2

الدولية للمعلومات ش.م.ل.

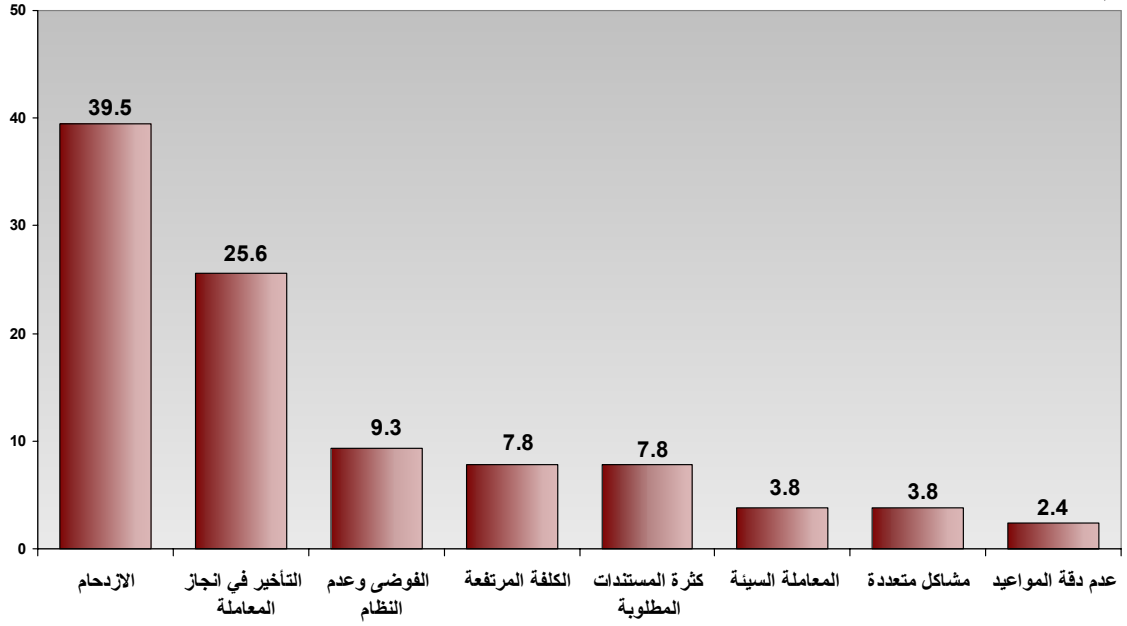
-3

2001



(%)

رسم 4



97:

Information International SAL

4

الدولية للمعلومات ش.م.ل.ر

-5

(9)

300 5 60
300 1.8
()
%46
." %43 %11

-6

%7.5 %11.5 %41
." %37.5 %2.5

.II

-1

%60

%40

%14.4

%30.9

%44.3

%2.2

%8.2

-2

%31.9

%38.6

%5

%6.8

%9.2

%1.7

%1.7

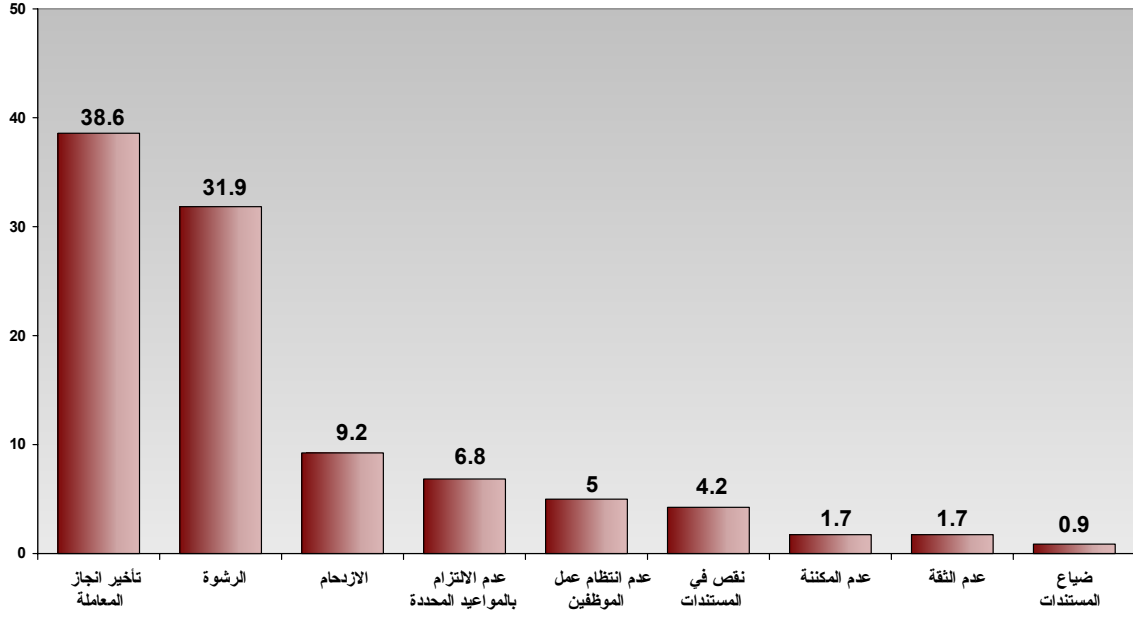
%4.2

.(5)

%0.9

(%)

رسم 5



97 :

Information International SAL

5

الدولية للمعلومات ش.م.ل.ر.

-3

%48.2

%22.4

%29.4

-4

%73.6

%26.4

%78.2 :

%6.4

%12.8

%2.6

%82.1

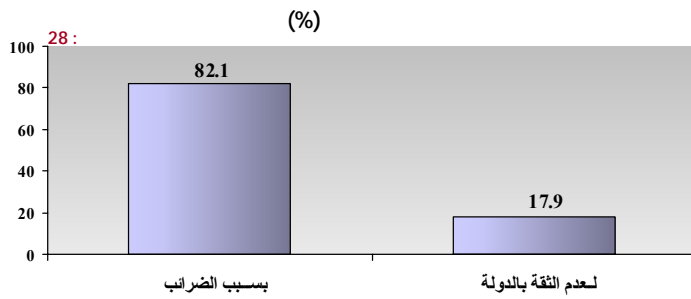
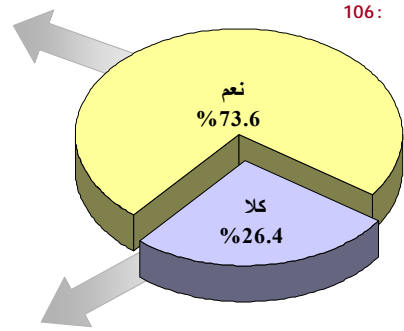
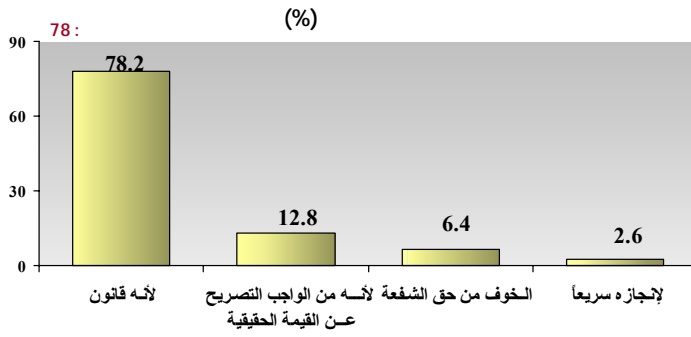
(6) .

%17.9

-

-

(%)



Information International SAL

6

الدولية للمعلومات ش.م.ل.ر.

-5

%28.6

%71.4

%42.5

%57.5

-6

%91

" " %5.5 %3.5

:

(%48.5)

-

%76.2

-

%29.4

6

-

%43.5

%56.1

-

%43

%46

-

"

"

(%48.2)

-

%73.6 -

%42.5 %28.6 -

%91 -

%71.5		200			
		:		%28.5	
%14	44-35	%39.5	34-25	%27	24 %9.5
%2	%31	%69.5	55	%10	54-45
				%0.5	
%45.9 :					
%7.60	500-200	%39.5		1000-500	
200	%4.3	2000-1500	%2.2	1500-1000	
		2000		%0.5	
				%2.5	